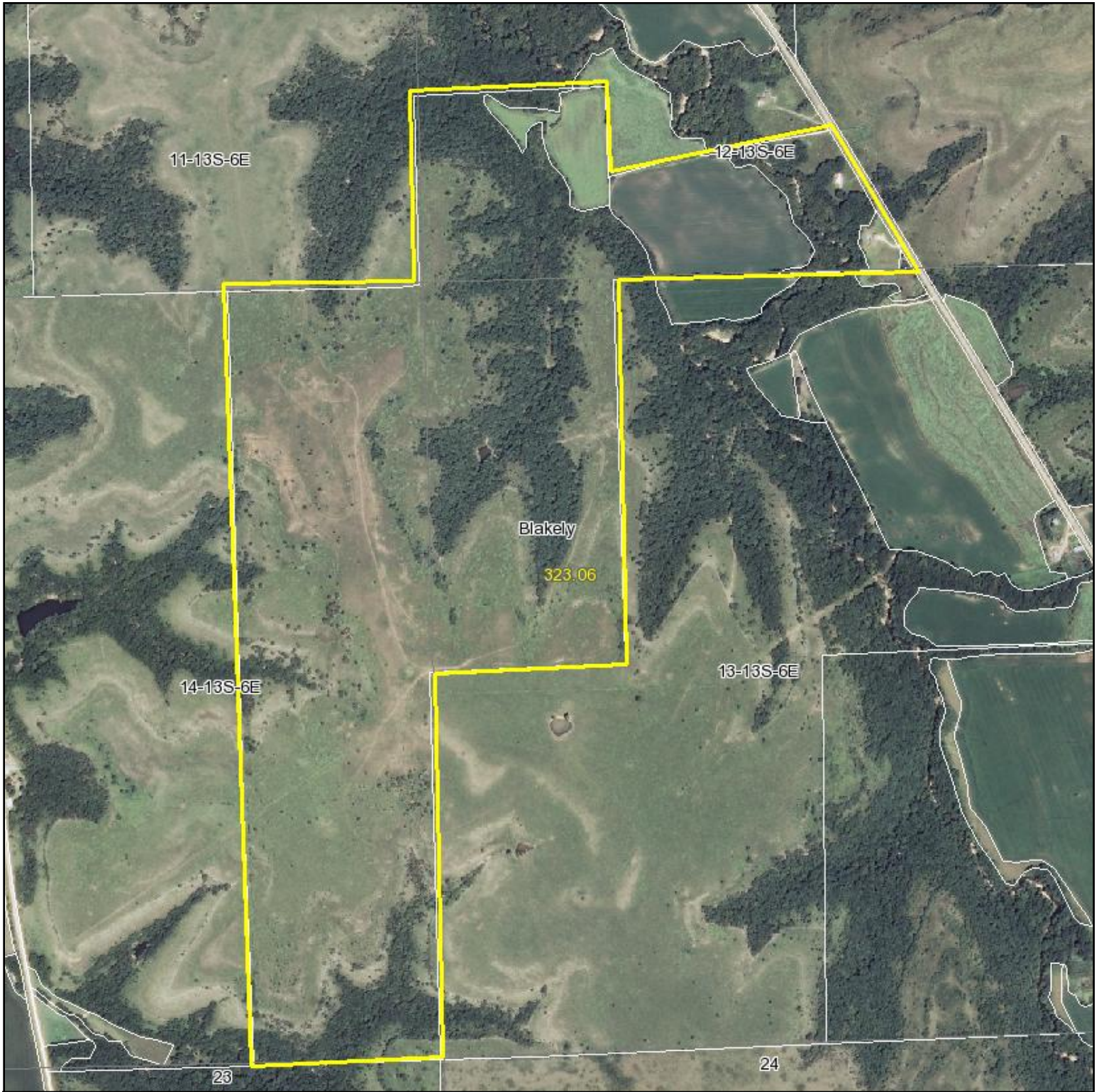


# Aerial Map



NICK RHODES  
WILDLIFE PROPERTIES

Maps provided by:  
 **surety**  
CUSTOMIZED ONLINE MAPPING

©AgriData, Inc. 2011  
www.AgriDataInc.com

**13-13S-6E**  
**Geary County**  
**Kansas**

map center: 38° 55' 23.45, 96° 43' 15.42

scale: 12956



6/20/2011