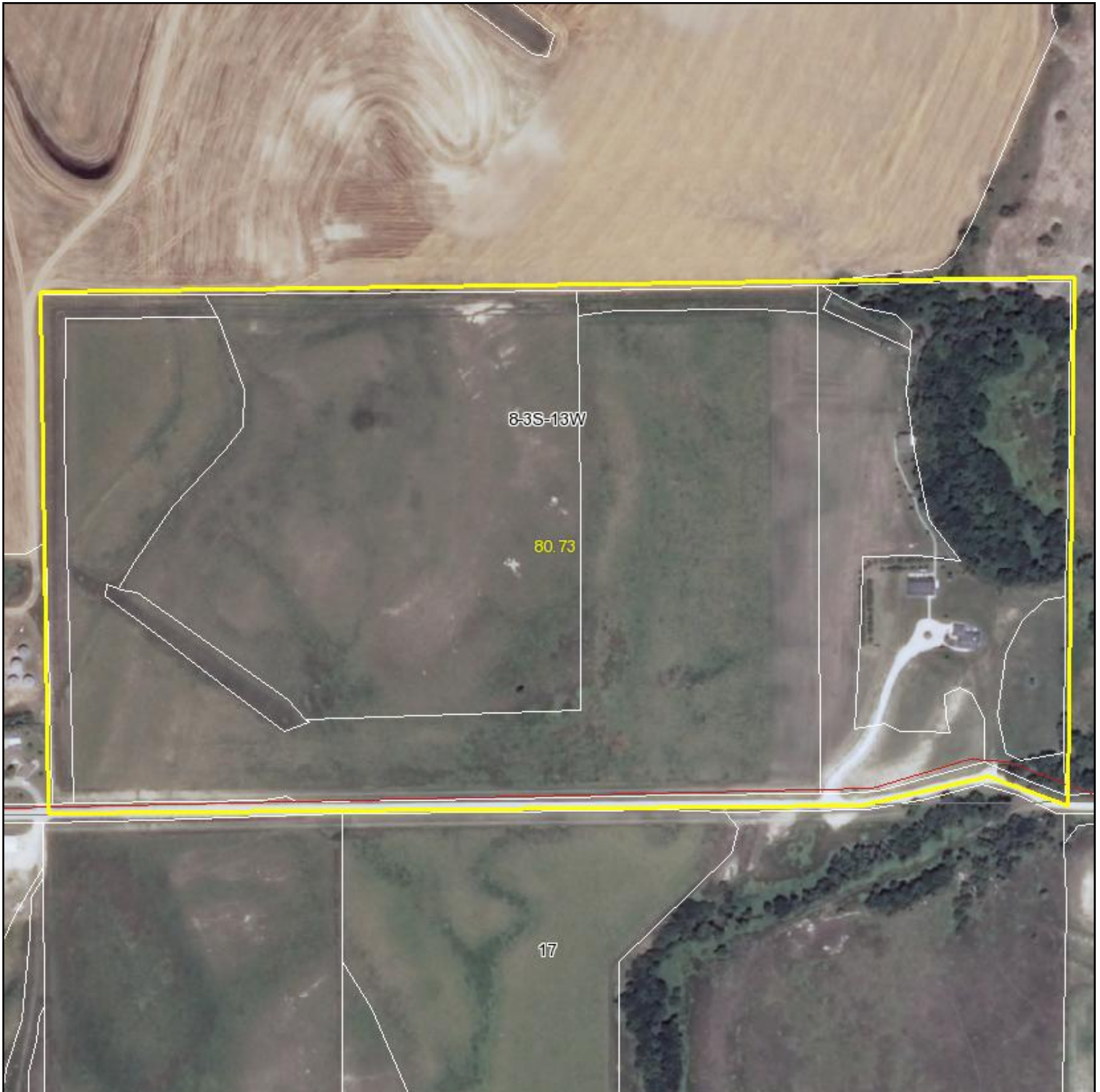


# Aerial Map



NICK RHODES  
WILDLIFE PROPERTIES

Maps provided by:  
 **surety**  
CUSTOMIZED ONLINE MAPPING

©AgriData, Inc. 2011  
www.AgriDataInc.com

**8-3S-13W**  
**Smith County**  
**Kansas**

map center: 39° 48' 4.88, 98° 48' 50.68

scale: 4871



9/13/2011